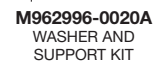
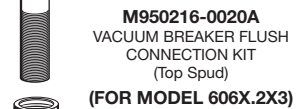
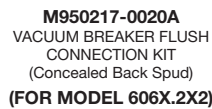
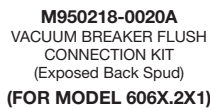
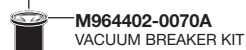
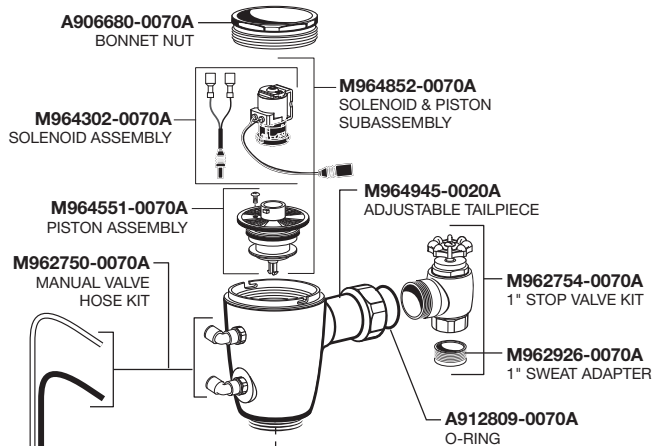
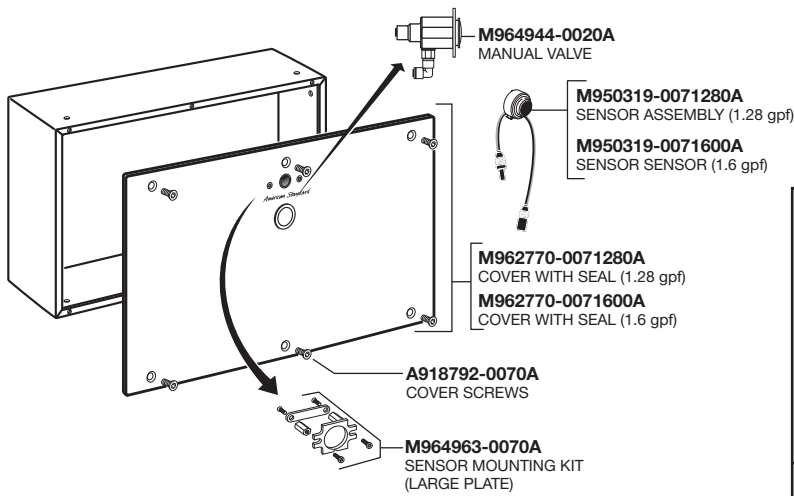


American Standard

SELECTRONIC®
CONCEALED TOILET FLUSH VALVE
1.28 & 1.6 GPF

MODEL NUMBERS	
6065.32X	6065.36X
6067.32X	6067.36X
6068.32X	6068.36X



DC STANDARD BATTERY
6065. Series

M950514-0070A
BATTERY HOLDER

M950510-0070A
27" EXTENSION CABLE

A923654-0070A
BATTERY 6V CR-P2

AC Plug-in
6067. Series

M950510-0070A
27" EXTENSION CABLE

M950512-0070A
Y-ADAPTER

M950338-0070A
POWER SUPPLY

AC Multi
6068. Series

M950511-0070A
10" EXTENSION

M950510-0070A
27" EXTENSION CABLE

M950512-0070A
Y-ADAPTER

HOT LINE FOR HELP
 For toll-free information and answers to your questions, call:
 (844) CRT-TEAM / (844) 278-8326
 Mon. - Fri. 8:00 a.m. to 8:00 p.m. EST Sat. 10:00 a.m. to 4:00 p.m. EST
 IN MEXICO 01-800-839-1200
 IN CANADA 1-800-387-0369 (TORONTO 1-905-306-1093)
 Weekdays 8:00 a.m. to 7:00 p.m. EST

Product names listed herein are trademarks of AS America, Inc. ©2015

To learn more about American Standard Selectronic® Products visit our website at:
www.americanstandard-us.com or e-mail us at: CRTTEAM@americanstandard.com